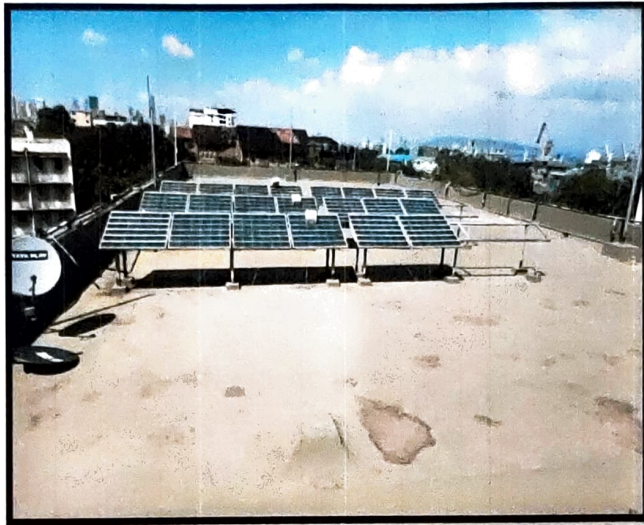


7.1.3 The Institution has facilities for alternate sources of energy and energy conservation devices 1. Solar energy 2. Wheeling to the Grid 3. Sensor based energy conservation 4. Biogas plant 5. Use of LED bulbs/ power efficient equipment

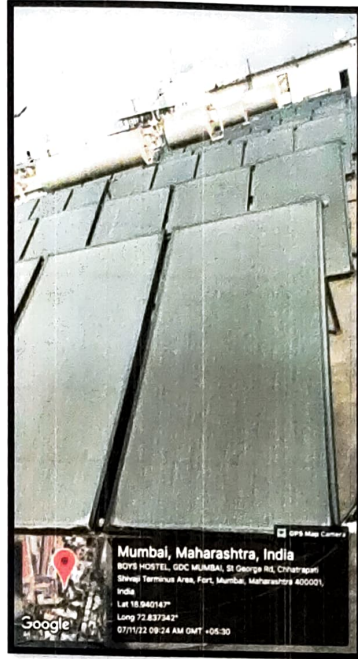
Response: D. Any two of the above

**SOLAR PANELS- COLLEGE AND HOSTEL BUILDING GDC MUMBAI**

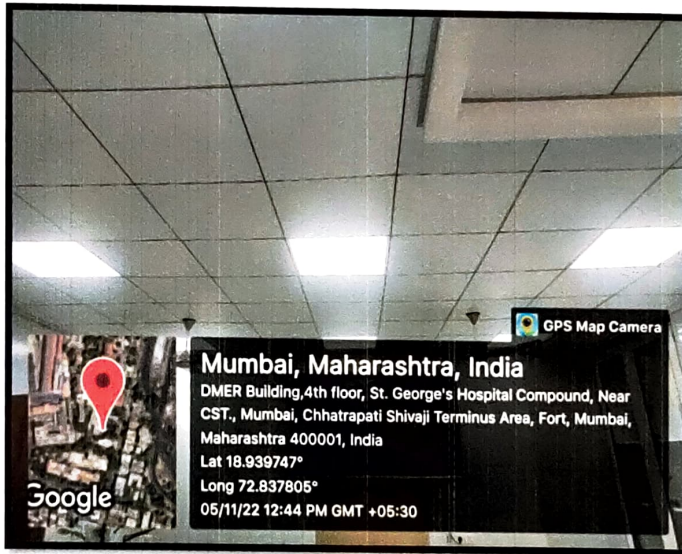


*Dr. P. S. 7*

**Dean**  
Govt. Dental College & Hospital  
Mumbai 400 001



LED LIGHTS



*Signature*

Dean  
Govt. Dental College & Hospital  
Mumbai 400 001